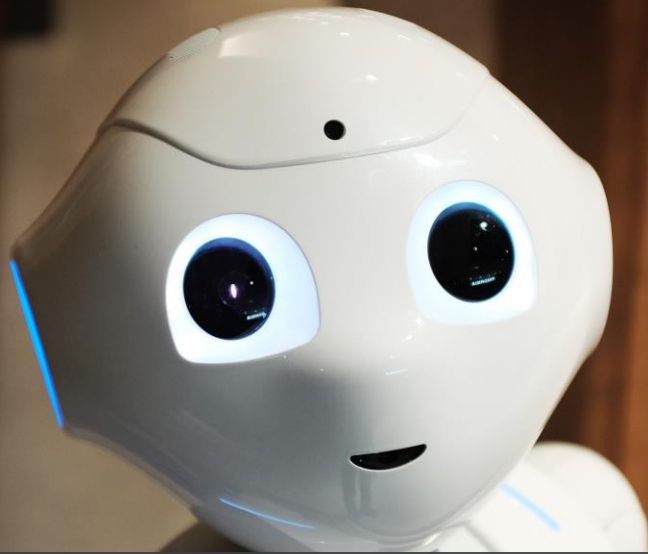




SpexAI®

ML Ops Engineer (f/m/x)



Your mission

- Build and design the ML Ops architecture of SpexAI and shape the future of a simplified plant production.
- Set-up the pipeline for bringing a ML model from a S3 bucket all the way to the edge device and the results back to the cloud.
- Ensure that data drift and concept drift are detected early.
- Close communication with our ML Engineering to secure a long-lasting success of our data-centric AI environment.
- Working with DevOps and Backend Engineers, you ensure that inference results will find its way to the Frontend.

Your skills

- | Already designed and built a MLOps pipeline to deploy a model to an edge device
- | AWS GreenGrass Version 2 experience is a plus
- | A drive to learn and master new technologies and techniques
- | Good verbal and written communication skills in English

Your benefits

Simplifying plant production – in Cannabis and beyond.

Shaping and growing a young company – together.

Working in an open, honest, and thriving environment.

Remote and onsite work with trust-based and flexible working hours.

Apply today

work@spexai.com